

BUILT TO LAST

Artisan & Post furniture is

handcrafted in the USA by craftsman working with the finest American grown hardwoods. Our products are the perfect blend of function and fashion & incorporate high-value & high quality details including:

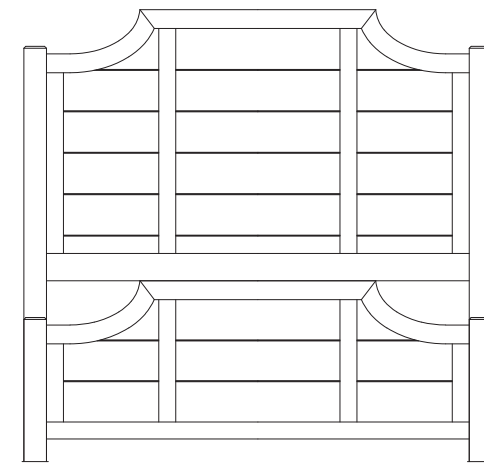
- English dovetail drawer construction
- Smooth running dual ball bearing drawer guides
- Mortise and tenon construction for strength and stability
- Piston-activated whisper close drawers
- Ultra smooth acrylic finish on interior drawers' sides & bottoms



-116 SWEATER CHEST
8 DRAWERS/2 DOORS W/SHELF

-117 MAPLE ROAD

Maple Syrup

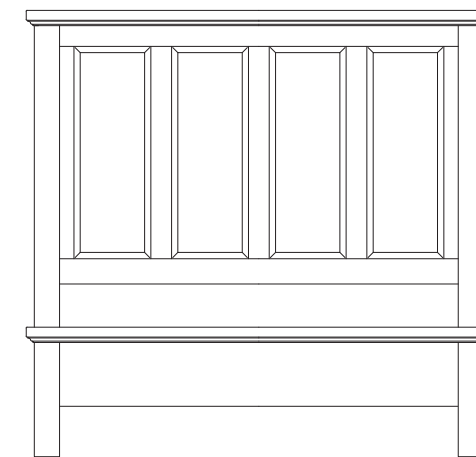


A. Scalloped Bed

-557 Scalloped Headboard, 5/0
62 $\frac{3}{8}$ x 2 $\frac{1}{8}$ x 60 $\frac{1}{4}$
-755 Scalloped Footboard, 5/0
62 $\frac{3}{8}$ x 2 $\frac{1}{8}$ x 24 $\frac{1}{4}$
-722 Wood Rails, 5/0
includes 5 slats/1 leg
82 x 5 $\frac{3}{4}$

-667 Scalloped Headboard, 6/6
79 $\frac{3}{8}$ x 2 $\frac{1}{8}$ x 62 $\frac{1}{4}$
-766 Scalloped Footboard, 6/6
79 $\frac{3}{8}$ x 2 $\frac{1}{8}$ x 26 $\frac{1}{4}$
-733 Wood Rails, 6/6
82 x 5 $\frac{3}{4}$

or
Cal King Bed substitute wood rail only
-944 Wood Rails, 6/0
86 x 5 $\frac{3}{4}$
MS-MS2 Metal Support Slats S/3

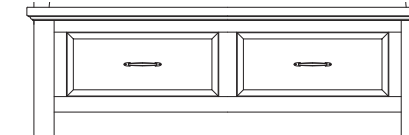


B. Mansion Bed

-559 Mansion Headboard, 5/0
65 $\frac{5}{8}$ x 3 $\frac{1}{4}$ x 62
-955 Low Profile Footboard, 5/0
64 $\frac{5}{8}$ x 4 x 18
-722 Wood Rails, 5/0
includes 5 slats/1 leg
82 x 5 $\frac{3}{4}$

-669 Mansion Headboard, 6/6
81 $\frac{5}{8}$ x 3 $\frac{1}{4}$ x 62
-966 Low Profile Footboard, 6/6
81 $\frac{5}{8}$ x 4 x 18
-733 Wood Rails, 6/6
or

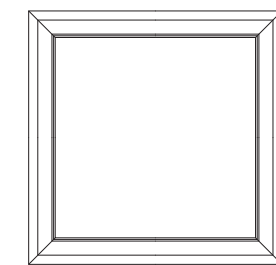
Cal King Bed substitute wood rail only
-944 Wood Rails, 6/0
86 x 5 $\frac{3}{4}$
MS-MS2 Metal Support Slats S/3



C. Storage Footboard

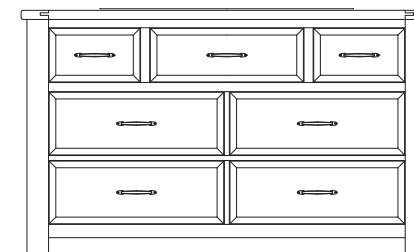
-050B Storage Footboard, 5/0
- 2 drawers
64 $\frac{5}{8}$ x 3 $\frac{1}{4}$ x 20 $\frac{3}{4}$
-502 Storage Bed Rails, 5/0 & 6/6
82 x 12 $\frac{3}{8}$
AP-555T Slat Roll, 5/0

-066B Storage Footboard, 6/6
- 2 drawers
81 $\frac{5}{8}$ x 3 $\frac{1}{4}$ x 20 $\frac{3}{4}$
-502 Storage Bed Rails, 5/0 & 6/6
82 x 12 $\frac{3}{8}$
AP-666T Slat Roll, 6/6



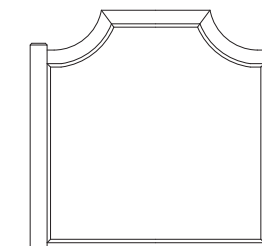
D. -446 Landscape Mirror

Beveled Glass
38 $\frac{3}{16}$ x 1 $\frac{1}{2}$ x 38 $\frac{3}{16}$



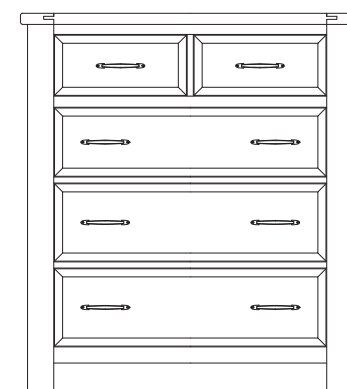
E. -003 Triple Dresser

7 Drawers
62 x 19 x 38



F. -447 Scalloped Mirror

Beveled Glass
38 $\frac{1}{4}$ x 2 x 36 $\frac{1}{4}$



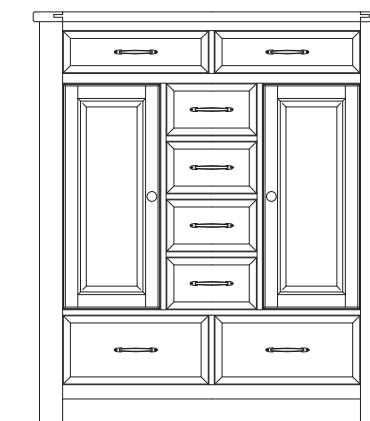
G. -115 Chest

-5 Drawers
42 x 19 x 47



H. -227 Nightstand

-2 Drawers
27 x 16 x 27



I. -116 Sweater Chest

-8 Drawers/Two Doors
50 x 19 x 58



ARTISAN & POST

EST. 1919

ARTISAN & POST

SUSTAINABLY MADE

We replace every tree used to make our furniture through a unique & innovative program developed with the Virginia Department of Forestry. Over 2 million trees planted since 2007.

MADE IN USA

SOLID MAPLE
& BIRCH

MAPLE ROAD collection





MADE IN THE USA

Since 1919, our company has been manufacturing quality wooden bedroom furniture in our own Galax, Virginia factory. Our 600 skilled Virginia craftsman and our homegrown products - Maple & Birch grown within a day's drive of our factory - means that we are able to ensure the highest level of quality.



-115 CHEST
5 DRAWERS



QUEEN MANSION BED
-559 Mansion Headboard
-955 Low Profile Footboard
-722 Wood Rails
-003 Triple Dresser - 7 Drawers
-446 Landscape Mirror - Beveled Glass
-227 Nightstand - 2 Drawers



QUEEN SCALLOPED STORAGE BED
-557 Scalloped Headboard
-050B Storage Footboard - 2 drawers
-502 Storage Bed Rails
-555T Slat Roll